

State of Wyoming Corner Record

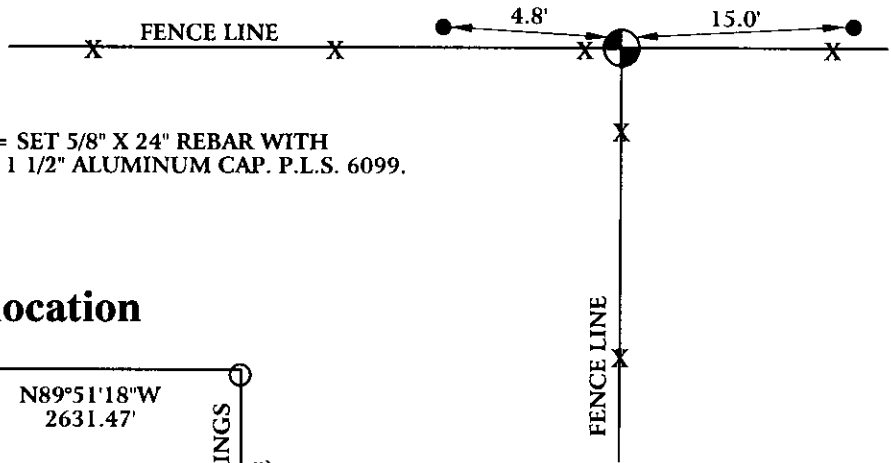
(In compliance with the CORNER PERPETUATION AND FILING ACT, Wyoming Statutes, 1997 Section 33-29-140 et. seq., and the Rules and Regulations of the Board of Professional Engineers and Professional Land Surveyors)

Reverse side of this form may be used if more space is needed.

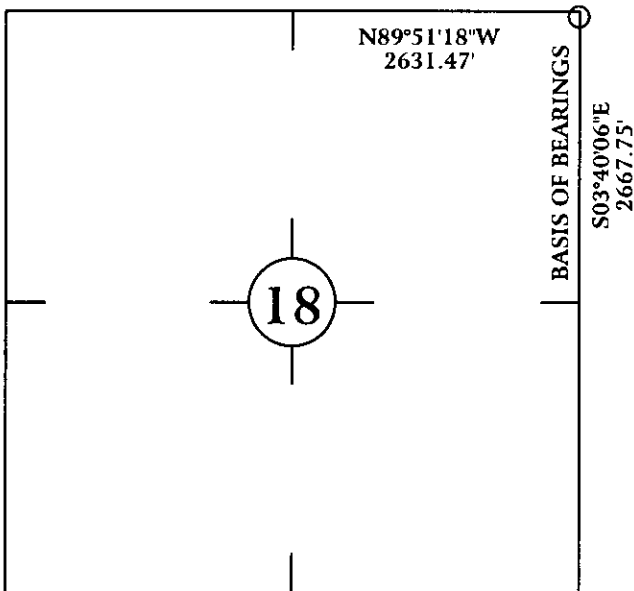
Record of original survey and citation of source of historical information (if corner is lost or obliterated). Description of corner monumentation evidence found and/or monument and accessories established to perpetuate the location of this corner. Sketch of relative location of monument, accessories, and reference points with course and distance to adjacent corner(s) (if determined in this survey). Method and rationale for reestablishment of lost or obliterated corner.

ORIGINAL CALL FOR 18" X 14" X 9" CONGLOMERATE STONE.

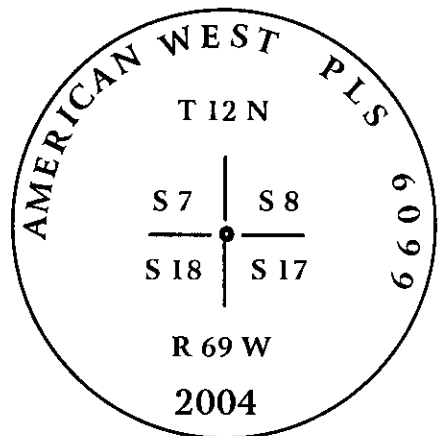
ACCEPTED FENCE INTERSECTION AS BEST EVIDENCE AND SET 3/4" X 30" REBAR WITH 3 1/4" ALUMINUM CAP P.L.S. 6099 INSIDE PIPE, AND SET TIES AS SHOWN BELOW.



Monument location



Monument Inscription



Date of Field Work: 10/21/04

Office Reference: AW04-8634

3 1/4" ALUMINUM CAP ON
3/4" X 30" REBAR

Cross Index Plat

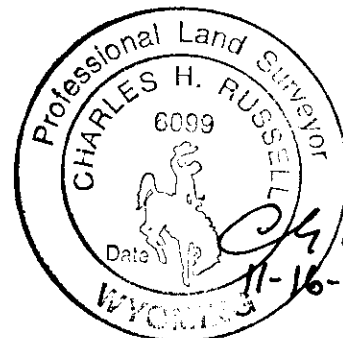
	1	2	3	4	5	6	7	8	9	10	11	12	13	14	15	16	17	18	19	20	21	22	23	24	25		
A																										A	
B																										B	
C		6	5	4	3	2	1																			C	
D																										D	
E																										E	
F																										F	
G		7	8	9	10	11	12																			G	
H																										H	
I																										I	
J																										J	
K																										K	
L		18	17	16	15	14	13																			L	
M																										M	
N																										N	
O																										O	
P		19	20	21	22	23	24																			P	
Q																										Q	
R																										R	
S																										S	
T		30	29	28	27	26	25																			T	
U																										U	
V																										V	
W																										W	
X		31	32	33	34	35	36																			X	
Y																											Y
Z																											Z

Firm/Agency, Address
CHARLES H. RUSSELL P.L.S. 6099
AMERICAN WEST LAND SURVEYING CO.
29 SOUTH 4TH AVENUE
BRIGHTON, CO 80601

This corner record was prepared
by me or under my direction
and supervision.

SEAL & SIGNATURE

Telephone Number:
303-659-1532



RECORDED 2/17/2005 AT 1:48 PM REC# 409597 BK# 1865 PG# 137
DEBRA K. LATHROP, CLERK OF LARAMIE COUNTY, WY PAGE 1 OF 1

Corner Name: Northeast Corner, Sections 18, T 12 N, R 69 W, 6th P.M.
County: Laramie

Cross-Index No.: J-5